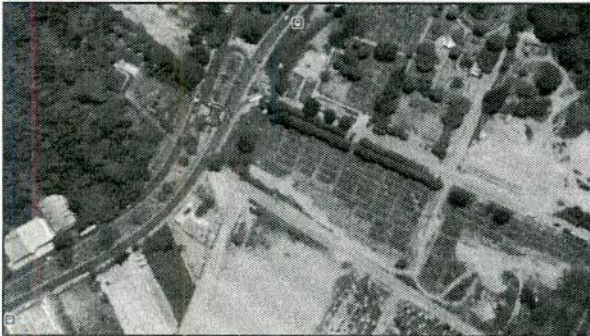


## ANEXO IV – Eventual posicionamento das câmeras

### CÂMERAS TIPO BULLET 2MP (ITEM 7.1.1)

GEOCOM / SEMEF	
22 / 2020	
Folha	Assinatura
348	mana





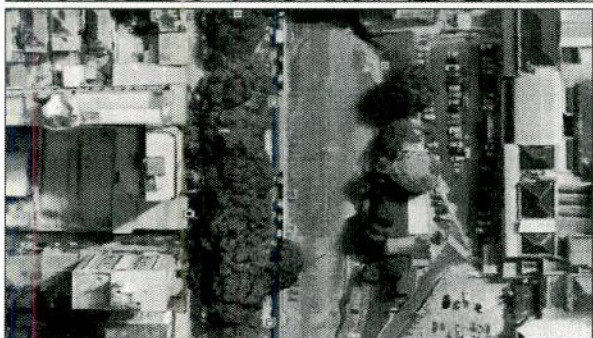
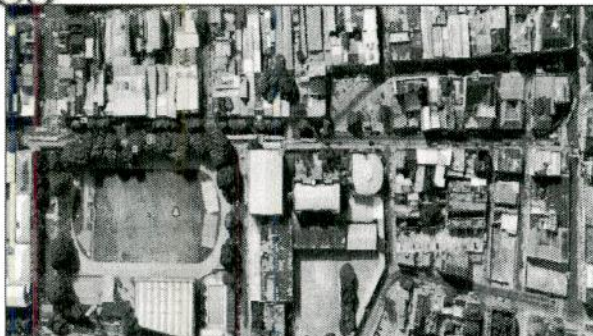


PREFEITURA DE  
**MANAUS**

# SEMEF

Secretaria Municipal de Finanças  
e Tecnologia da Informação

2020.11209.11214.9.089847 (Folha 91)  
Au Brasil, 2971 - Compensa II  
Manaus-AM - CEP 69036-110  
T: +55 92 3625-6078  
[www.manaus.am.gov.br](http://www.manaus.am.gov.br)



GL 2017 SEMEF	
Siged	22 / 2020
Folha	349
Assinatura	man







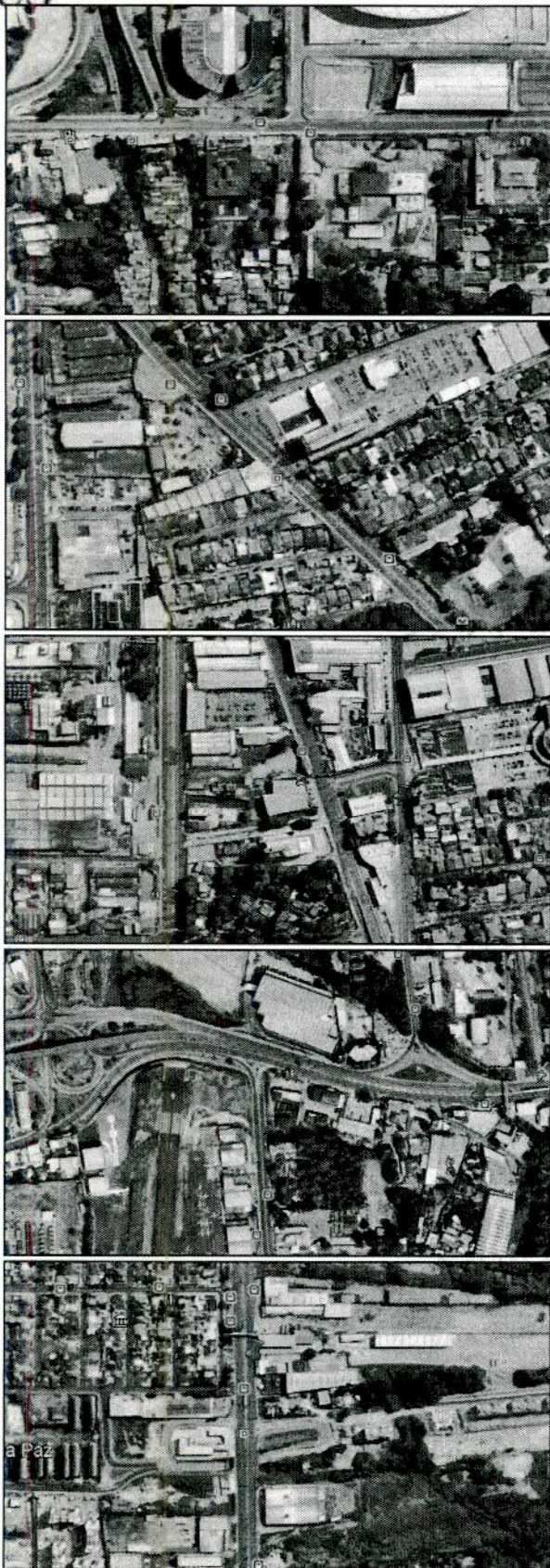
PREFEITURA DE  
MANAUS

# SEMEF

Secretaria Municipal de Finanças  
e Tecnologia da Informação

2020.11209.11214.9.089847 (Folha 92)

Au Brasil, 2971 - Compensa II  
Manaus-AM - CEP 69036-110  
T: +55 92 3625-6078  
www.manaus.am.gov.br



GEO/AM / SEMEF	
22 / 2020	
folha	Assinatura
350	man







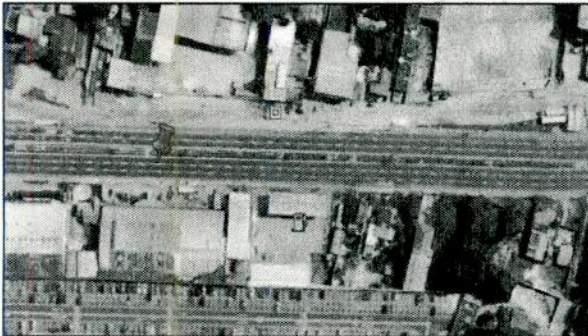
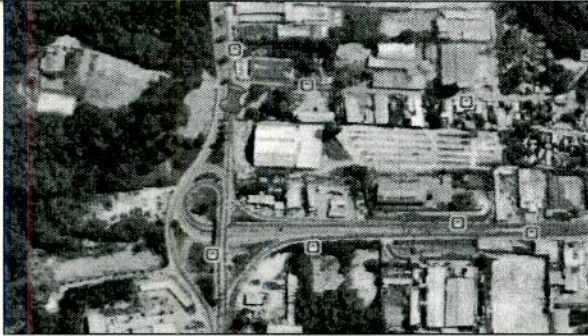
PREFEITURA DE  
MANAUS

# SEMEF

Secretaria Municipal de Finanças  
e Tecnologia da Informação

Au Brasil, 2971 - Compensa II  
Manaus-AM - CEP 69036-110  
T: +55 92 3625-6078  
www.manaus.am.gov.br

2020.11209.11214.9.089847 (Folha 93)



GECOM/SEMEF	
Processo nº 02 / 2020	
Folha 351	Assinatura maca







PREFEITURA DE  
**MANAUS**

# SEMEF

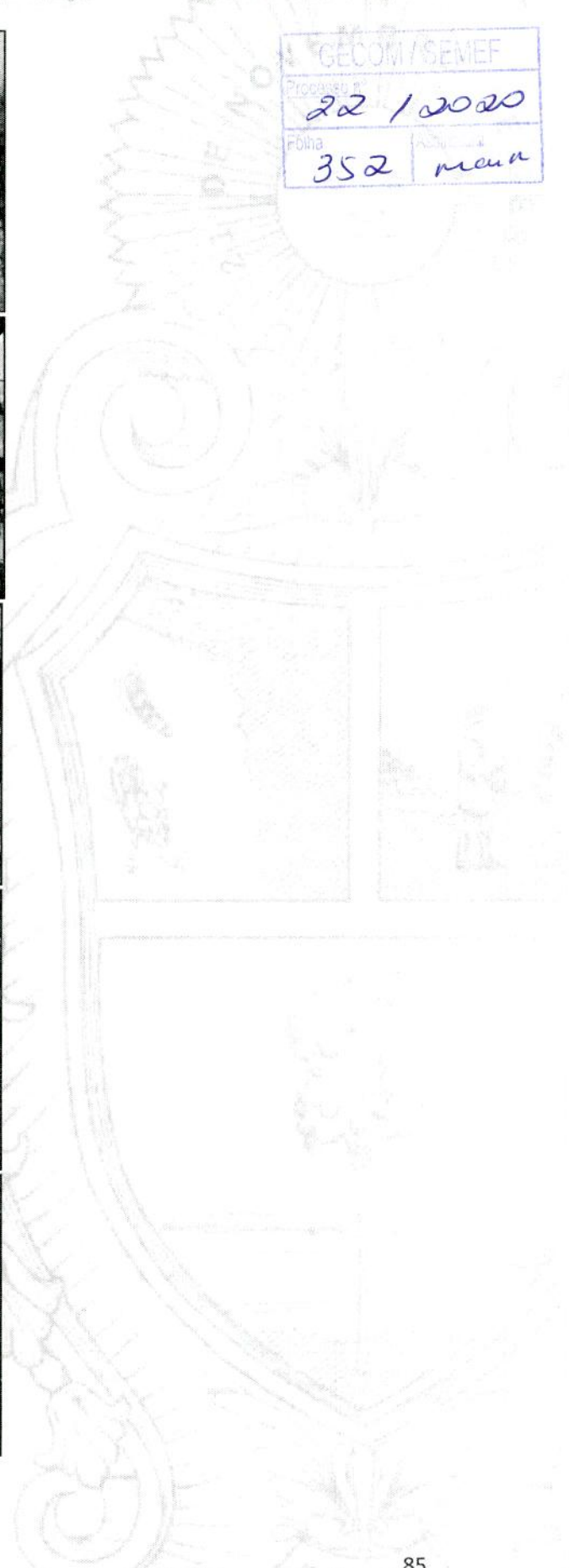
Secretaria Municipal de Finanças  
e Tecnologia da Informação

2020.11209.11214.9.089847 (Folha 94)

Au Brasil, 2971 - Compensa II  
Manaus-AM - CEP 69036-110  
T: +55 92 3625-6078  
[www.manaus.am.gov.br](http://www.manaus.am.gov.br)



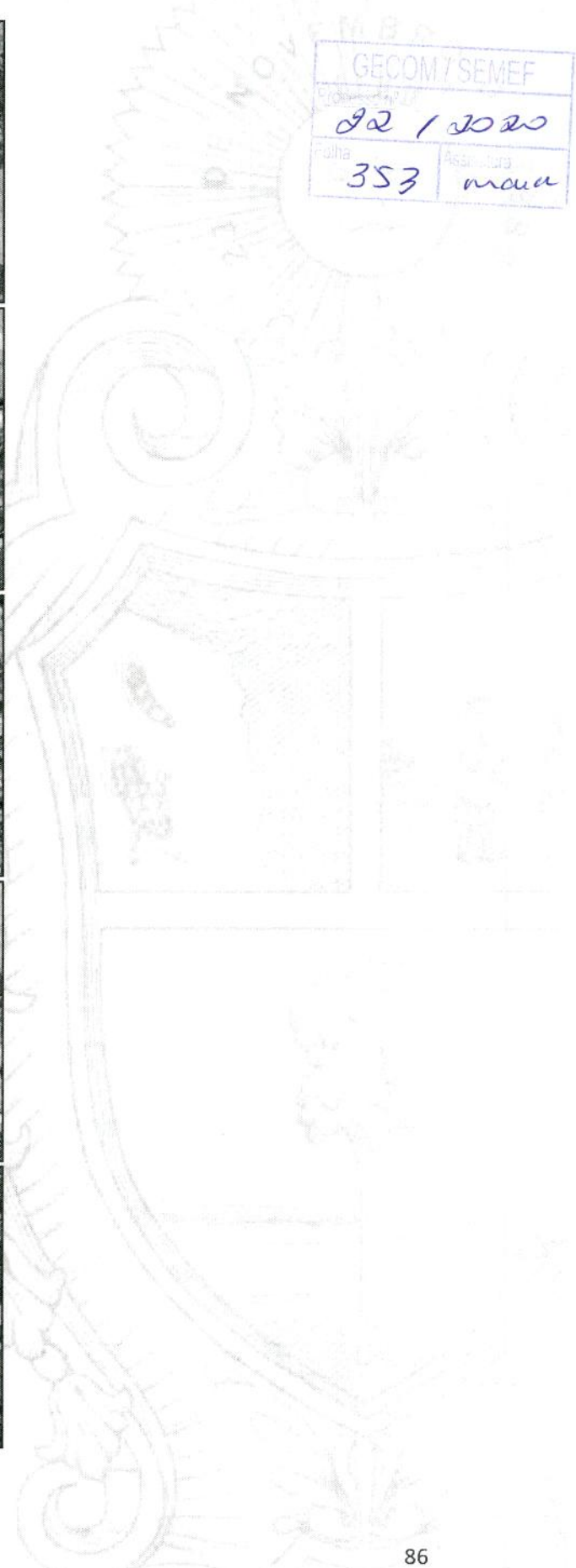
GECOM/SEMEF	
Processo nº	22 / 2020
Folha	352 manau



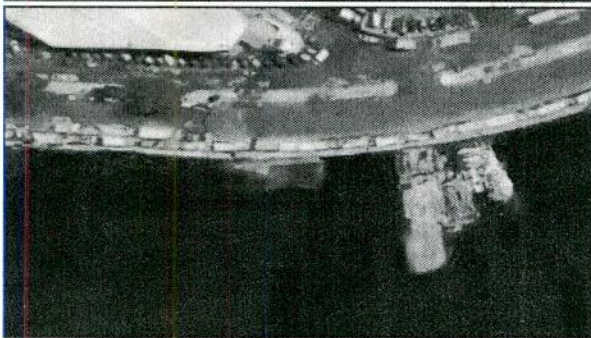




GECOM7 SEMEF	
22 / 10 / 20	
Folha	Assinatura
353	maua







GECOM/SEMEF	
Processo nº 02 / 2020	
Folha 354	Assinatura maia







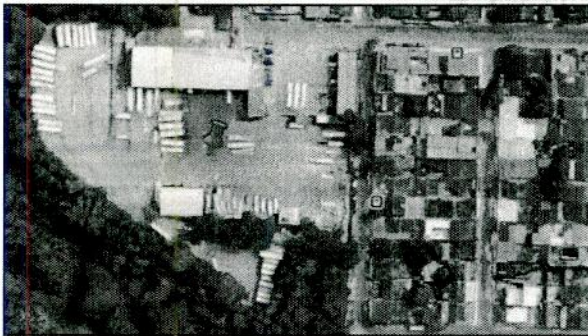
PREFEITURA DE  
**MANAUS**

# SEMEF

Secretaria Municipal de Finanças  
e Tecnologia da Informação

2020.11209.11214.9.089847 (Folha 97)

Au Brasil, 2971 - Compensa II  
Manaus-AM - CEP 69036-110  
T: +55 92 3625-6078  
[www.manaus.am.gov.br](http://www.manaus.am.gov.br)



GECOM / SEMEF	
22 / 2020	
355	maia





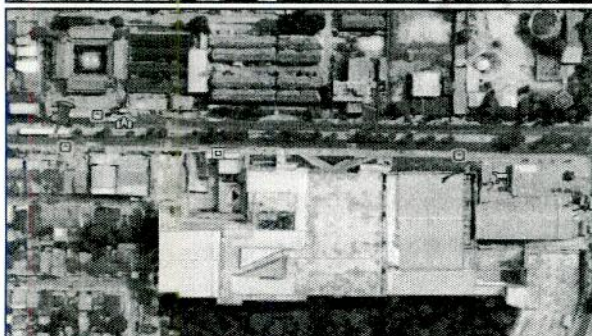


PREFEITURA DE  
**MANAUS**

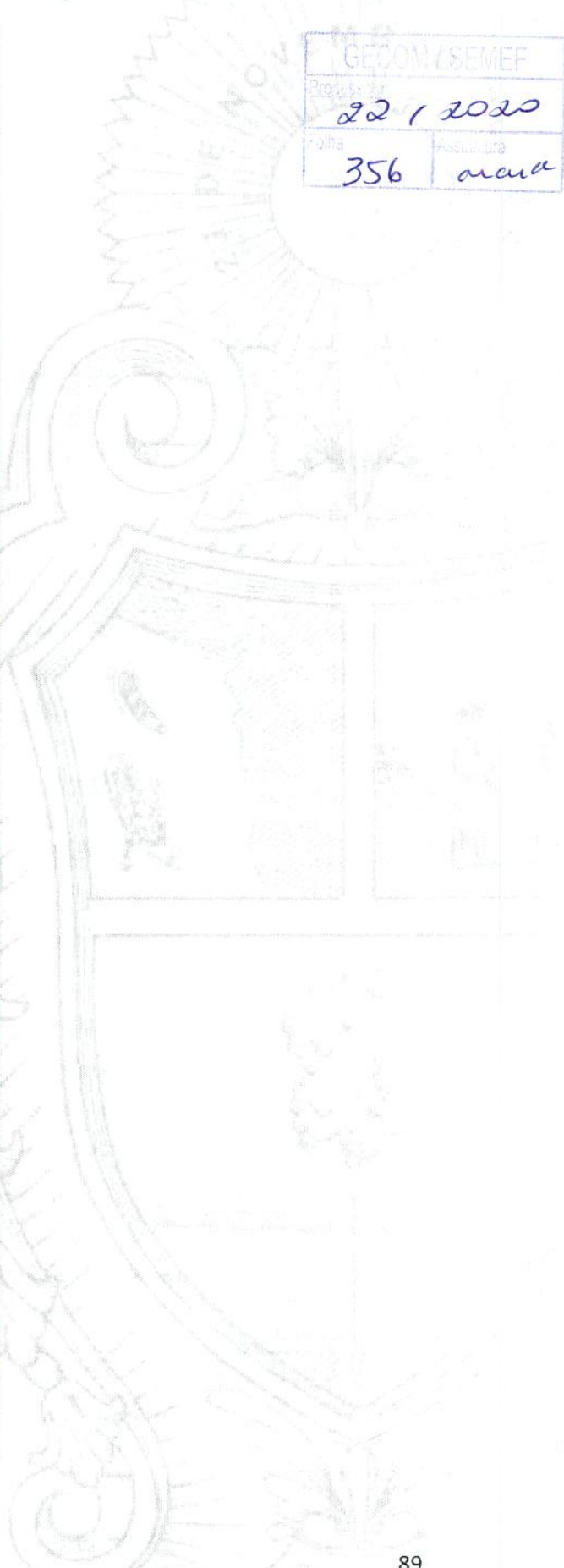
# SEMEF

Secretaria Municipal de Finanças  
e Tecnologia da Informação

2020.11209.11214.9.089847 (Folha 98)  
Av Brasil, 2971 - Compensa II  
Manaus-AM - CEP 69036-110  
T: +55 92 3625-6078  
[www.manaus.am.gov.br](http://www.manaus.am.gov.br)



GECOM / SEMEF	
Processo	22 / 2020
Folha	356
Assinatura	mana





GECOM/SEMEF	
Processo nº	22/2020
Folha	357
Assinatura	man

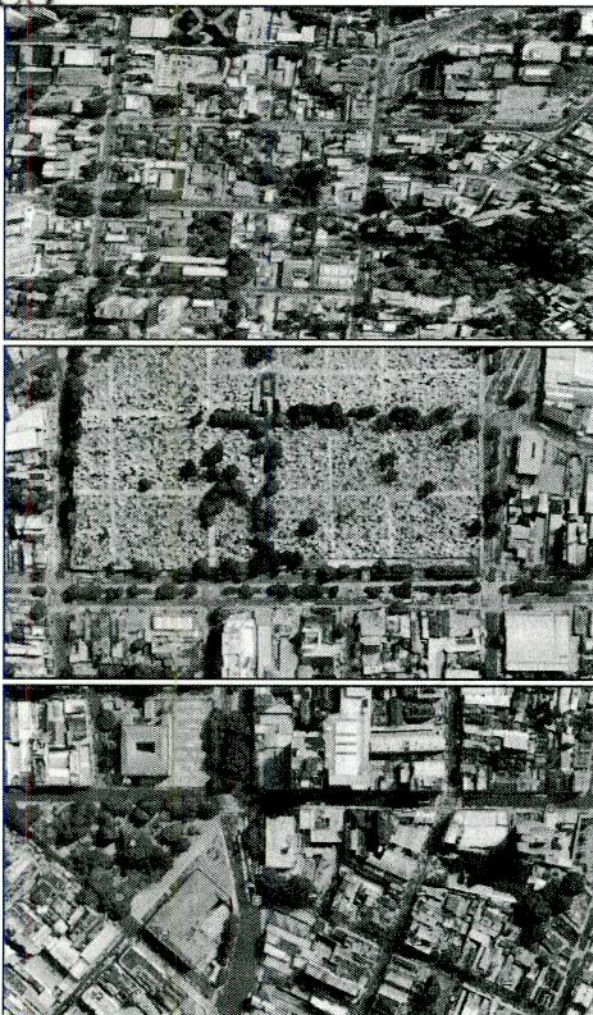
### CÂMERA TIPO BULLET 5MP (ITEM 7.1.2)



### CÂMERAS MULTISENSORE (ITEM 7.1.3)







GECOM / SEMEF	
92 / 2020	
Folha	Assinatura
358	man



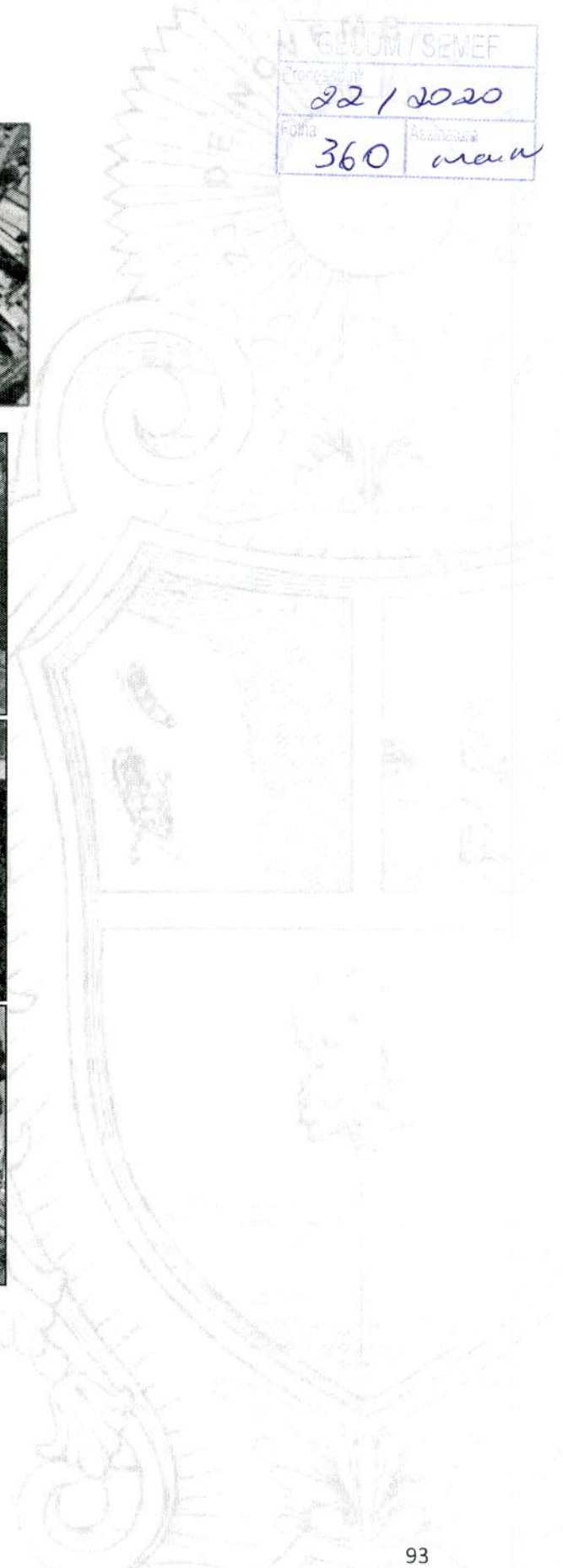
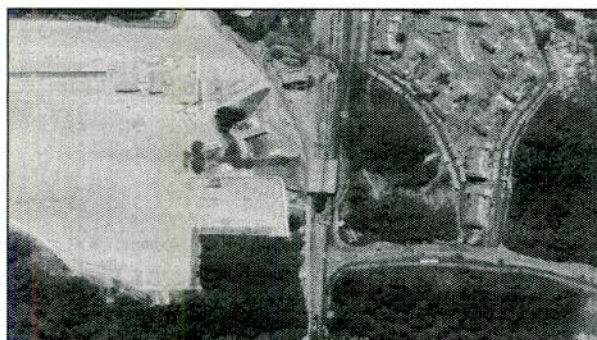


359 man





GECOM / SEMEF	
Processo nº 22 / 2020	
Folia 360	Assinatura man







GECOM/SEMEF	
22 / 2020	
folha	Assinatura
361	mana

